

FSSC 24000

A SOCIAL MANAGEMENT SYSTEM

Ante Batinic
Technical Manager Social Sustainability

April 9, 2025





TODAY'S TOPICS

1. Purpose and Intend
2. Scheme structure & approach
3. Audit Process & Scope
4. Accreditation & licensening requirements

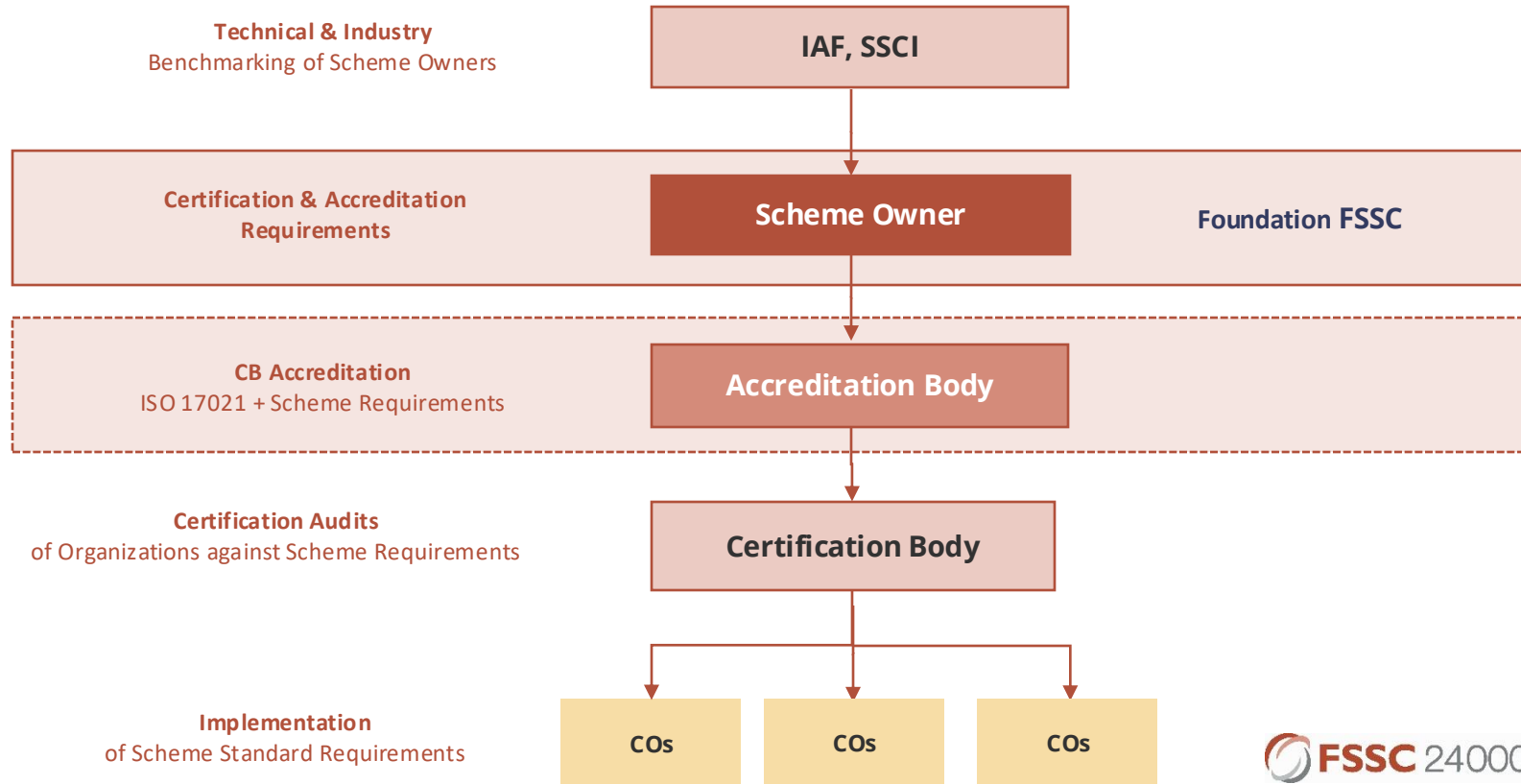
FSSC 24000 PURPOSE AND INTEND

FSSC 24000 | AIM AND OBJECTIVES

- ▶ FSSC 24000 is an ISO-aligned **Social Management System** (SMS) that aims to ensure *decent work*, meet business ethics requirements, and apply human rights due diligence within the organization and their supply chain.
- ▶ Create **impact** through setting public goals linked to the UN Sustainable Development Goals.
- ▶ FSSC 24000 outlines the requirements for the **audit and certification** of the Social Management System (SMS) of an organization within the scope of certification.
- ▶ Voluntary Certification Scheme



CERTIFICATION GOVERNANCE



INDUSTRY RECOGNITION

› SSCI (January 2024)

Foundation FSSC has successfully completed the SSCI Benchmarking process and achieved SSCI Recognition for FSSC 24000.

› IAF MLA (April 2024)

The International Accreditation Forum (IAF) and Foundation FSSC signed an updated Scheme Endorsement Agreement to recognize the FSSC 24000 certification Scheme under the IAF Multilateral Recognition Arrangement (MLA).

› International Trade Center Standards Map (May 2024)

Alongside the FSSC 22000 Scheme, we completed the process of benchmarking the FSSC 24000 Scheme and having it listed on the Standards Map database.

SCHEME STRUCTURE & APPROACH

FSSC 24000 ADDITIONAL REQUIREMENTS

PART 1 SCHEME OVERVIEW

This part provides context and more details about the Scheme and its scopes.

PART 2 REQUIREMENTS FOR ORGANIZATIONS TO BE AUDITED

This part states the Scheme requirements against which licensed Certification Bodies shall audit the SMS of the organization against the requirements of FSSC 24000.

PART 3 REQUIREMENTS FOR THE CERTIFICATION PROCESS

This part states the requirements for the execution of the certification process to be conducted by licensed Certification Bodies.

PART 4 REQUIREMENTS FOR CERTIFICATION BODIES

This part states the requirements for licensed Certification Bodies who wish to provide FSSC 24000 certification services to organizations.

PART 5 REQUIREMENTS FOR ACCREDITATION BODIES

This part specifies the criteria against which the Foundation will recognize and register Accreditation Bodies that provide accreditation to Certification Bodies.

FSSC 24000 TECHNICAL SUPPORT

▶ **MyFSSC**

The Foundation FSSC provides Scheme interpretation articles for Certification Bodies holding a (provisional) license and for Accreditation Bodies.

▶ **Audit Report Templates**

A download area containing audit report templates developed by the Foundation FSSC and made available for use to all CBs.

▶ **Support Helpdesk**

Technical support can also be provided through a ticketing system that enables rapid and targeted processing of requests.

AUDIT PROCESS & SCOPE OF CERTIFICATION

FSSC 24000 AUDIT PROCESS

Compared to FSSC 22000, FSSC 24000 offers a broader scope of certification and intend that is not limited to the Food sector.

 **FSSC 22000** → Food Safety System Certification

 **FSSC 24000** → Social Sustainability System Certification

FSSC 24000 expands its scope to the manufacturing and processing sector (food and non-food), including their related service provision, whereas FSSC 22000 is limited to the food sector.

However, the structure and lay-out of both Schemes, are similar, providing a familiar, robust, audit and integrity process for already FSSC 22000 certified organizations and allowing for seamless integration into existing management systems.

SCOPE OF CERTIFICATION

- ▶ Organizations in the consumer goods manufacturing and processing sector (food and non-food), including their related service providers.
- ▶ The scope refers to the economic sector/activity with related IAF codes (please refer to Part 1, Table 1 of the Scheme).

Exclusions

Processing and manufacturing and the related trade of tobacco and tobacco products, fur and fur products, weapons, explosives and ammunition, and nuclear fuel products.

SCOPE OF CERTIFICATION

Considering applications for certification:

- ▶ Is organization's scope within the FSSC 24000 scope of certification – refer to Table 1.
- ▶ Ensure that scope does not fall within the general exclusions of activities
- ▶ CB has the necessary resources to offer the certification services to the client.

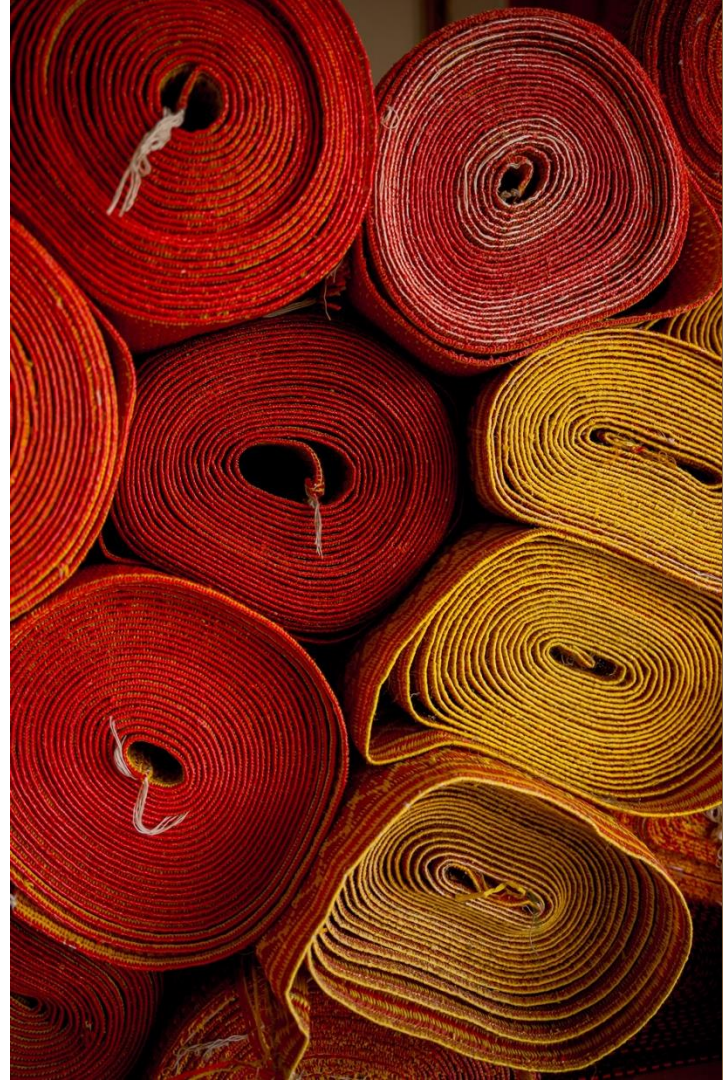
Also, refer to ISO/IEC 17021-1 clause 9, specifically relating to the process requirements for application and application review.

INTEGRATION

- ▶ FSSC 24000 enables seamless **integration and transition** of existing and valid certificates held by organizations that have an existing accredited third-party social certification to another standard or certification program recognized by SSCI.

Key benefits are:

- ▶ The audit duration of the transition audit can be reduced based on the existing certification.
- ▶ A transition that covers all aspects of human rights obligations and supply chain due diligence.



FSSC 24000 AUDIT PARTICULARITIES

FSSC 24000 requires special audit procedures and processes. These are:

- ▶ The consideration of the entire company structure and all interrelated supply chains or outsourced operations under the umbrella of the organization.
- ▶ To conduct worker interviews and file reviews, which is a major component of the triangulation methodology.
- ▶ At least once per certification cycle, an unannounced audit is required.
- ▶ All shifts should be audited once in the audit cycle.

ACCREDITATION & LICENSING REQUIREMENTS

SCOPE OF ACCREDITATION

In addition to the requirements of ISO/IEC 17011, the scope of accreditation shall be clearly defined and be part of the accreditation certificate issued by the AB as defined below:

- a) FSSC 24000 (Social Management System Certification) – relevant applicable version.
- b) Normative documents (latest version linked to the Scheme) for providing certification:
 - I. BSI/PAS 24000:2022;
 - II. Additional FSSC 24000 requirements;

ACCREDITATION REQUIREMENTS



The CB shall be **accredited to ISO/IEC 17021-1: 2015**.

The requirements in ISO/IEC 17021-1 apply unless specific (additional) requirements are referenced in the Scheme.

IAF Mandatory documents:

MD1, 2, 4, 11; as well as Informative documents ID 1, 3, 12.

The Accreditation Body shall:

- be a current **member of the International Accreditation Forum (IAF)**,
and
- be a signatory of the **IAF Multilateral Recognition Arrangement (MLA) for Management System Certification**.

RECOMMENDED PROFILE REQUIREMENTS

Part 5, Section 2.2.3, iv) of the Scheme states that the AB assessor//assessment team must have the required competence and knowledge of the FSSC 24000 specific requirements.

- ▶ Lead assessor must complete at least the FSSC 24000 training courses
- ▶ Technical Experts may support the Accreditation Body Assessment Team in the execution of FSSC 24000 accreditation audits of new applicant Certification Bodies.
- ▶ A technical expert may be assigned as a part of the assessment team (see also ISO/IEC 17011:2017, clause 7.4.1).
- ▶ Completion of a recognized Lead Auditor Course for an ISO-based Management System Standard that incorporates the applicable concepts of ISO 19011 – minimum 40 hours including exam.

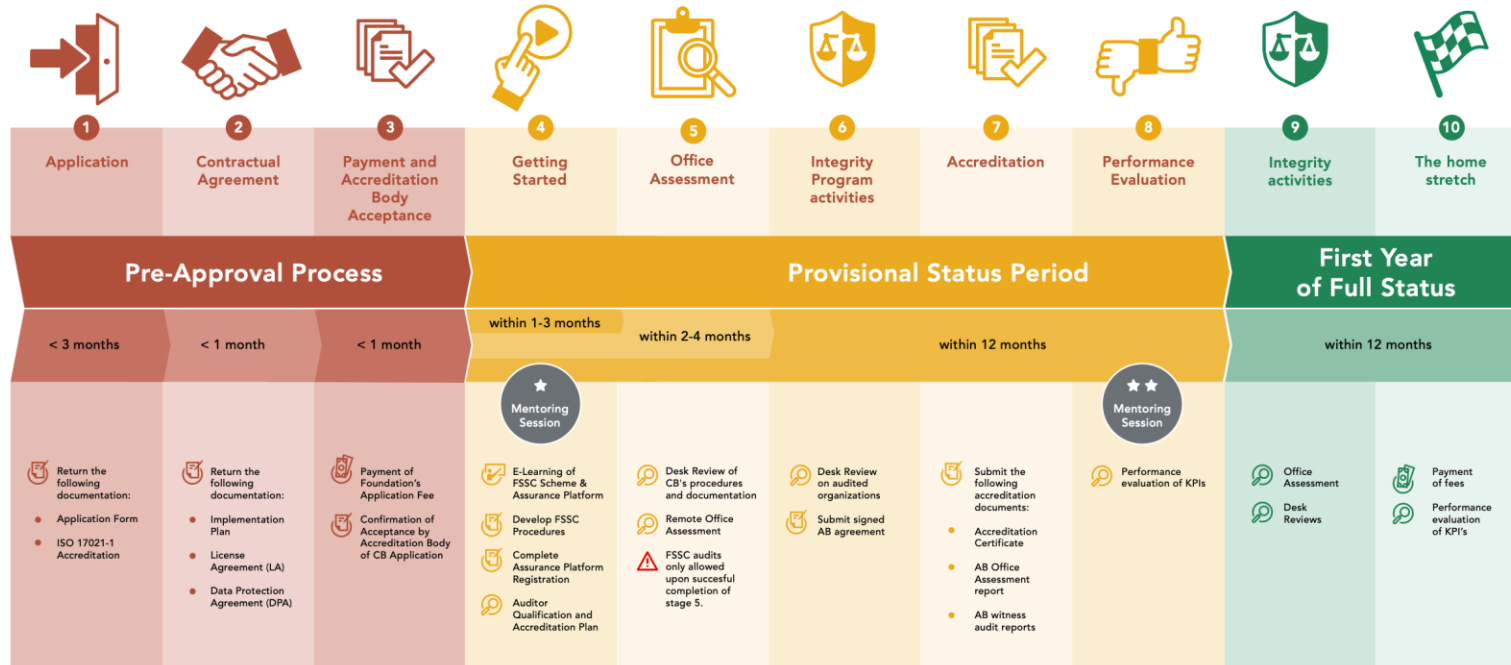
APSCA

- CB needs to be a *member of APSCA*
- APSCA qualification level (ASCA/CSCA) = pre-requisite for FSSC 24000 auditor qualification
- Auditors must be “in good standing”
- Auditors need to list FSSC 24000 as the scheme under their profile –which is important for auditor log and information sharing



FSSC 24000 OBP

FSSC 24000 Onboarding Program



THANK
YOU



info@fssc.com



+31 (0)183 – 64 50 28