

Using Reconstructed Data Smartly

Nikhil Kumar
ADAPT, NABL - India

Source of Data (refer ISO/IEC 17011)

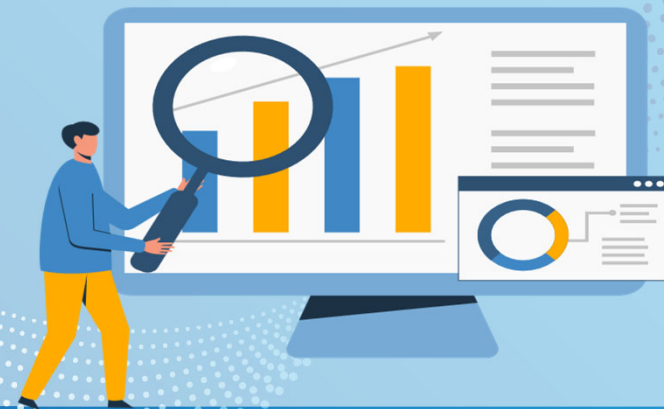
- **Clause 7.2 – Application of Accreditation**
- **Clause 7.6.4 – Assessment Team**
- **Clause 7.7.2 – Accreditation decision-making**
- **Clause 7.8 – Accreditation information**



Source of Data (refer ISO/IEC 17011)

➤ Clause 7.2 – Application of Accreditation

legal entity, name, address, legal status and human and technical resources, scope of accreditation, equipment, reference materials, PT/ILC etc.



Source of Data (refer ISO/IEC 17011)

➤ Clause 7.6.4 – Assessment Team

The assessment team shall analyse all relevant information and objective evidence gathered prior to and during the assessment to determine the competence of the conformity assessment body as determined through its conformity with the requirements for accreditation.

comments on competence, scope assessed,
test witness, nonconformities etc.



Source of Data (refer ISO/IEC 17011)

➤ Clause 7.7.2 – Accreditation decision-making

The accreditation body shall ensure that each decision on **granting, maintaining, extending, reducing, suspending and withdrawing** accreditation is taken by competent person(s) or committee(s)



Source of Data (refer ISO/IEC 17011)

➤ Clause 7.8 – Accreditation information

Scope of Accreditation

measurand or reference material, measurement method, instrument or material or measured, measurement range, measurement uncertainty

materials or products, component, parameter, tests performed, the techniques, methods and/or equipment used, range of testing etc.

Proficiency testing schemes, Reference materials



Data Reconstruction

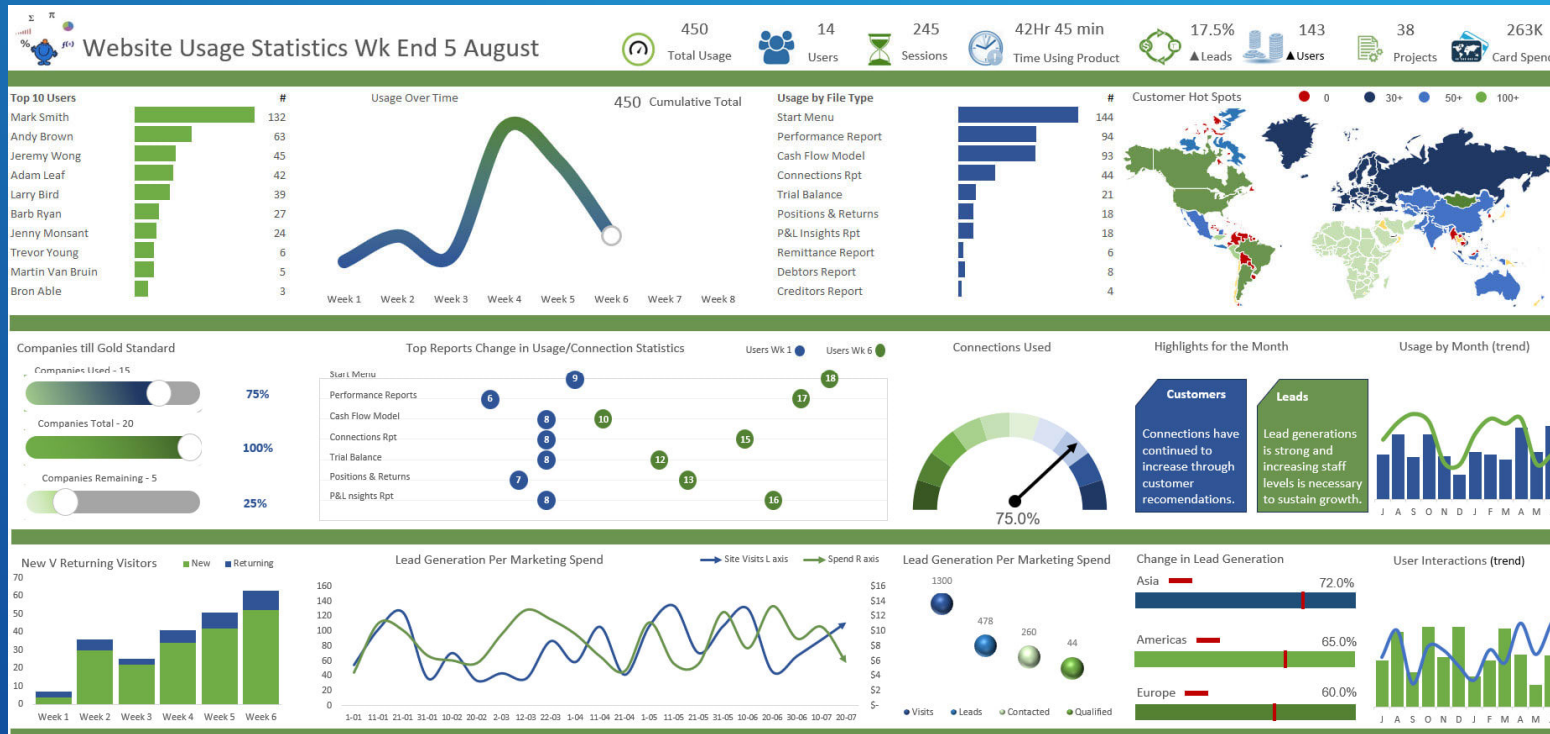
➤ Standardization of Data

For example

- **Legal Entity** – (Companies Act, Limited Liability Partnership, Society/Trust Act, Government)
- **Type of CAB** – (In-house, Open to others, Partially open to others)
- **Scope of Accreditation** – Masters (Field, Discipline, Sub-discipline, Group, Matrix, Test Method Standard/Developed)



Use of Reconstructed Data



Accreditation Body

- Data analysis – Ease of Operation
- Monitoring/Planning of CAB assessment program (Surveillance, Renewal, Load distribution, PT/EQA/ILC plan)
- Blind Spot (CAB, Assessors)
- Policy Decision by AB (Regional coordinators, Regulatory requirements)
- Monitoring and follow-up on deadlines (Activities like – Document review, NC, Financials, upcoming activities...)

Advance Search Mechanism

- Accreditation Program – (ISO/IEC 17020, ISO/IEC 17025, ISO 15189 etc.)
- Sector Specific (Food, COVID test, Energy Meter, High Voltage, CMC, Technique, Range (5000kN), Temperature (1700 °C, Telecom...)
- Test Method and Capability (ISO, IEC, ASTM, DIN...)
- Category (Government, Private, Inhouse, Open to others)
- Any complex search can be done easily - sars cov-2 in various provinces / districts, laser interferometer in length measurement

MIS Reports

- Reporting software and APIs
- AI
- Transfer/Exchange of data

Limitation

- Speed
- Free text vs Structured data
- confidentiality and security
- own historical data to create and compare



Questions/Comments



Thank You!